

SIMPLY THE BLACK.

OBO BlackLine:
parts list

Building Connections

OBO
BETTERMANN

Cable support systems

Cable tray RKS-Magic® 60 FS, black



Item no.	Type	Width mm	Colour
6048239	RKSM 610 FSK SW	100	Jet black; RAL 9005
6048253	RKSM 620 FSK SW	200	Jet black; RAL 9005
6048265	RKSM 630 FSK SW	300	Jet black; RAL 9005
6048269	RKSM 640 FSK SW	400	Jet black; RAL 9005

Cable tray MKS-Magic® 60, unperforated, black



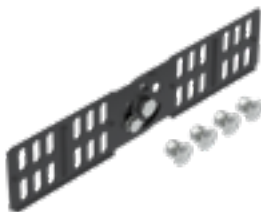
Item no.	Type	Width mm	Colour
6062979	MKSMU 610 FSK SW	100	Jet black; RAL 9005
6062995	MKSMU 620 FSK SW	200	Jet black; RAL 9005
6062996	MKSMU 630 FSK SW	300	Jet black; RAL 9005
6062997	MKSMU 640 FSK SW	400	Jet black; RAL 9005

Straight connector 60 FSK, black



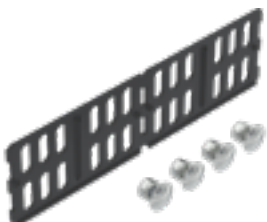
Item no.	Type	Suitable for cable tray system height mm	Colour
6067097	RLVK 60 FSK SW	60	Jet black; RAL 9005

Adjustable connector 60 FSK, black



Item no.	Type	Suitable for cable tray system height mm	Colour
7082759	RGV 60 FSK SW	60	Jet black; RAL 9005

Straight and angle connector 60 FSK, black



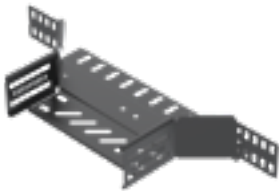
Item no.	Type	Suitable for cable tray system height mm	Colour
6067624	RWVL 60 FSK SW	60	Jet black; RAL 9005

90° bend 60, black



Item no.	Type	Width mm	Colour
6043260	RB 90 610 FSK SW	100	Jet black; RAL 9005
6043262	RB 90 620 FSK SW	200	Jet black; RAL 9005
6043264	RB 90 630 FSK SW	300	Jet black; RAL 9005
6043266	RB 90 640 FSK SW	400	Jet black; RAL 9005

Add-on tee 60, black



Item no.	Type	Width mm	Colour
7121860	RAA 610 FSK SW	100	Jet black; RAL 9005
7121862	RAA 620 FSK SW	200	Jet black; RAL 9005
7121864	RAA 630 FSK SW	300	Jet black; RAL 9005
7121866	RAA 640 FSK SW	400	Jet black; RAL 9005

Separating retainer 45 FSK, black



Item no.	Type	Height mm	Colour
6479451	TSG 45 FSK SW	45	Jet black; RAL 9005

Wall and support bracket AW 15, black



Item no.	Type	Width mm	Colour
6420681	AW 15 11 FTK SW	110	Jet black; RAL 9005
6420683	AW 15 21 FTK SW	210	Jet black; RAL 9005
6420685	AW 15 31 FTK SW	310	Jet black; RAL 9005
6421210	AW 15 41 FTK SW	410	Jet black; RAL 9005

Centre suspension for cable tray, side height 60 mm, black



Item no.	Type	Width mm	Colour
6358740	MAH 60 100 FSKSW	100	Jet black; RAL 9005
6358742	MAH 60 200 FSKSW	200	Jet black; RAL 9005
6358744	MAH 60 300 FSKSW	300	Jet black; RAL 9005
6358746	MAH 60 400 FSKSW	400	Jet black; RAL 9005

Suspension bracket, black



Item no.	Type	Width mm	Colour
6363875	AHB 100 FT SW	127	Jet black; RAL 9005
6363877	AHB 200 FT SW	231	Jet black; RAL 9005
6363878	AHB 300 FT SW	331	Jet black; RAL 9005
6363879	AHB 400 FT SW	431	Jet black; RAL 9005

US 3 suspended support FSK, black



Item no.	Type	Length mm	Colour
7265690	US 3 K 20 FTK SW	200	Jet black; RAL 9005
7265693	US 3 K 30 FTK SW	300	Jet black; RAL 9005
7265696	US 3 K 40 FTK SW	400	Jet black; RAL 9005
7265740	US 3 K 50 FTK SW	500	Jet black; RAL 9005

Spacer FTK, black



Item no.	Type	Width mm	Colour
6479548	DSK 25 FTK SW	40	Jet black; RAL 9005

Protective cap for US 3 support, black



Item no.	Type	Length mm	Colour
6338456	US 3 KS SW	55	Jet black; RAL 9005

Threaded rod



Item no.	Type	Length mm	Colour
3141540	TR M10 1M BR	1,000	Black
3141542	TR M10 2M BR	2,000	Black

Profile rail, 17 mm slot, perforated, black



Item no.	Type	Length mm	Colour
1104269	CML3518P0200 SW	200	Jet black; RAL 9005
1104285	CML3518P0300 SW	300	Jet black; RAL 9005
1104293	CML3518P0400 SW	400	Jet black; RAL 9005
1104307	CML3518P0500 SW	500	Jet black; RAL 9005

Cable routing systems

Wall and ceiling trunking WDK



Item no.	Type	Width mm	Height mm	Colour
6022018	WDK60110SW	108.5	60.3	Jet black; RAL 9005
6024949	WDK15015SW	15	15	Jet black; RAL 9005
6025638	WDK40060SW	60	40	Jet black; RAL 9005
6026488	WDK25040SW	40	25	Jet black; RAL 9005

Internal corner hood, for trunking type WDK



Item no.	Type	Width mm	Height mm	Colour
6191760	WDK HI25040SW	40	25	Jet black; RAL 9005
6191762	WDK HI40060SW	65	40	Jet black; RAL 9005
6191764	WDK HI60110SW	65	40	Jet black; RAL 9005

External corner hood, for trunking type WDK



Item no.	Type	Width mm	Height mm	Colour
6191774	WDK HA25040SW	40	25	Jet black; RAL 9005
6191776	WDK HA40060SW	60	40	Jet black; RAL 9005
6191778	WDK HA60110SW	60	40	Jet black; RAL 9005

Flat angle cover, for trunking type WDK



Item no.	Type	Width mm	Height mm	Colour
6191790	WDK HF25040SW	40	25	Jet black; RAL 9005
6191792	WDK HF40060SW	65	40	Jet black; RAL 9005
6191794	WDK HF60110SW	110	60	Jet black; RAL 9005

End piece, for trunking type WDK



Item no.	Type	Width mm	Height mm	Colour
6191808	WDK HE25040SW	40	25	Jet black; RAL 9005
6191810	WDK HE40060SW	60	40	Jet black; RAL 9005
6191812	WDK HE60110SW	110	60	Jet black; RAL 9005
6191806	WDK HE15015SW	15	15	Jet black; RAL 9005

Partition



Item no.	Type	Trunking height mm	Colour
6023096	2371 40	40	Light grey; RAL 7035
6023118	2371 60	60	Light grey; RAL 7035

Device installation trunking



Item no.	Type	Width mm	Height mm	Colour
6274504	GK-70130SW	130	70	Jet black; RAL 9005
6113003	GK-53100SW	100	53	Jet black; RAL 9005

Plastic trunking cover, smooth



Item no.	Type	Width mm	Height mm	Colour
6278684	GK-OTGSW	76.5	12	Jet black; RAL 9005

Internal corner hood, for Rapid device installation trunking



Item no.	Type	Width mm	Height mm	Colour
6274443	GK-IH70130SW	139	155	Jet black; RAL 9005
6113073	GK-IH53100SW	110	53	Jet black; RAL 9005

External corner hood, for Rapid device installation trunking



Item no.	Type	Width mm	Height mm	Colour
6274413	GK-AH70130SW	139	73	Jet black; RAL 9005
6113053	GK-AH53100SW	110	55	Jet black; RAL 9005

Flat angle hood, for Rapid device installation trunking



Item no.	Type	Width mm	Height mm	Colour
6274423	GK-FH70130SW	138	73	Jet black; RAL 9005
6113093	GK-FH53100SW	107	55	Jet black; RAL 9005

End piece, for Rapid device installation trunking



Item no.	Type	Width mm	Height mm	Colour
6274573	GK-E70130SW	135	73	Jet black; RAL 9005
6113113	GK-E53100SW	106	56	Jet black; RAL 9005

Partition GK-TW



Item no.	Type	Width mm	Height mm	Colour
6113290	GK-TW53	10	38	Light grey; RAL 7035
6274900	GK-TW70	44.5	10	Light grey; RAL 7035

Service pole, floor



Item no.	Type	Pole height mm	Colour
6290054	ISSRHSM45SW	675	Jet black; RAL 9005

Accessory mounting box



Item no.	Type	Width mm	Height mm	Colour
6288569	71GD8-2	76	71	Iron grey; RAL 7011
6288610	71GD6	76	71	Iron grey; RAL 7011
6288532	71GD11	76	140	Iron grey; RAL 7011
6288583	71GD13	76	142	Iron grey; RAL 7011
6288608	71GD7-2	76	142	Iron grey; RAL 7011
6288579	71GD9-2	76	160	Iron grey; RAL 7011

Duct clamp



Item no.	Type	Width mm	Height mm	Colour
6288640	KL80A	94	12	Light grey; RAL 7035

Strain relief



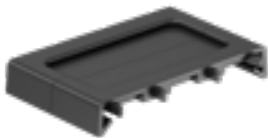
Item no.	Type	Width mm	Height mm	Colour
6288790	7ZE	28	14	Graphite black; RAL 9011

Mounting support



Item no.	Type	Width mm	Height mm	Colour
6288572	71MT1 45	76	71	Light grey; RAL 7035
6288576	71MT2 45	76	127	Light grey; RAL 7035
6288574	71MT3 45-2	76	160	Light grey; RAL 7035
6288577	71MTD	76	71	Light grey; RAL 7035

Brush outlet



Item no.	Type	Width mm	Height mm	Colour
6288638	BA80	78	12	Black

Connection and routing systems

Black powder-coated steel pipe, without thread



Item no.	Type	Nominal thread size metric/PG	Colour
2046565	S16W SW	M16	Jet black; RAL 9005
2046566	S20W SW	M20	Jet black; RAL 9005
2046567	S25W SW	M25	Jet black; RAL 9005
2046568	S32W SW	M32	Jet black; RAL 9005
2046569	S40W SW	M40	Jet black; RAL 9005

Black powder-coated steel pipe, with thread



Item no.	Type	Nominal thread size metric/PG	Colour
2046500	SM16W SW	M16	Jet black; RAL 9005
2046501	SM20W SW	M20	Jet black; RAL 9005
2046502	SM25W SW	M25	Jet black; RAL 9005
2046503	SM32W SW	M32	Jet black; RAL 9005
2046505	SM40W SW	M40	Jet black; RAL 9005

Black powder-coated steel bend, without thread



Item no.	Type	Nominal thread size metric/PG	Colour
2046824	SBN16 SW	M16	Jet black; RAL 9005
2046825	SBN20 SW	M20	Jet black; RAL 9005
2046826	SBN25 SW	M25	Jet black; RAL 9005
2046827	SBN32 SW	M32	Jet black; RAL 9005
2046828	SBN40 SW	M40	Jet black; RAL 9005

Black powder-coated steel bend, with thread



Item no.	Type	Nominal thread size metric/PG	Colour
2046793	SBNM16 SW	M16	Jet black; RAL 9005
2046794	SBNM20 SW	M20	Jet black; RAL 9005
2046795	SBNM25 SW	M25	Jet black; RAL 9005
2046796	SBNM32 SW	M32	Jet black; RAL 9005
2046797	SBNM40 SW	M40	Jet black; RAL 9005

Black powder-coated steel sleeve, without thread



Item no.	Type	Nominal thread size metric/PG	Colour
2046582	SV16W SW	M16	Jet black; RAL 9005
2046583	SV20W SW	M20	Jet black; RAL 9005
2046584	SV25W SW	M25	Jet black; RAL 9005
2046585	SV32W SW	M32	Jet black; RAL 9005
2046586	SV40W SW	M40	Jet black; RAL 9005

Black powder-coated steel sleeve, with thread



Item no.	Type	Nominal thread size metric/PG	Colour
2046522	SVM16W SW	M16	Jet black; RAL 9005
2046523	SVM20W SW	M20	Jet black; RAL 9005
2046524	SVM25W SW	M25	Jet black; RAL 9005
2046525	SVM32W SW	M32	Jet black; RAL 9005
2046526	SVM40W SW	M40	Jet black; RAL 9005

Quick clip



Item no.	Type	Nominal thread size metric/PG	Colour
2149559	2955 M16 SW	M16	Jet black; RAL 9005
2149563	2955 M20 SW	M20	Jet black; RAL 9005
2149567	2955 M25 SW	M25	Jet black; RAL 9005
2149571	2955 M32 SW	M32	Jet black; RAL 9005
2149575	2955 M40 SW	M40	Jet black; RAL 9005

proQuick clip



Item no.	Type	Nominal size	Colour
2147340	PQ-20 SW	20–23	Jet black; RAL 9005

Pipe end cap, splittable, metric



Item no.	Type	Nominal thread size metric/PG	Colour
2047936	129 TB M16 SW	M16	Black
2047944	129 TB M20 SW	M20	Black
2047952	129 TB M25 SW	M25	Black
2047971	129 TB M32 SW	M32	Black
2047979	129 TB M40 SW	M40	Black

Junction box T series



Item no.	Type	Clear internal dimensions mm	Colour
2007464	T 40 SW	77x77x46	Graphite black; RAL 9011
2007466	T 60 SW	100x100x48	Graphite black; RAL 9011
2007468	T 100 SW	136x102x57	Graphite black; RAL 9011

Junction box, A series



Item no.	Type	Clear internal dimensions mm	Colour
2000182	A11 HF SW	75x75x35	Graphite black; RAL 9011

Cable glands



Item no.	Type	Nominal thread size metric/PG	Colour
2022883	V-TEC VM12 SW	M12	Black
2022885	V-TEC VM16 SW	M16	Black
2022887	V-TEC VM20 SW	M20	Black
2022889	V-TEC VM25 SW	M25	Black
2022891	V-TEC VM32 SW	M32	Black
2022893	V-TEC VM40 SW	M40	Black

Locknut, metric thread, black



Item no.	Type	Nominal thread size metric/PG	Colour
2049066	116 M12 SW PA	M12	Black
2049074	116 M16 SW PA	M16	Black
2049082	116 M20 SW PA	M20	Black
2049090	116 M25 SW PA	M25	Black
2049104	116 M32 SW PA	M32	Black
2049112	116 M40 SW PA	M40	Black

Installation systems

Flex duct



Item no.	Type	Length mm	Colour
6154930	FLK-2K SWGR	1000	Black-grey; RAL 7021

Deskbox



Item no.	Type	Version	Colour
6116760	DBL-1B	With fastening clamps, unequipped	aluminium anodised
6116762	DBL-1B D2S 1C	With fastening clamp, 2 VDE sockets, USB Charger	aluminium anodised
6116764	DBL-1B D4S 1C	With fastening clamp, 4 VDE sockets, USB Charger	aluminium anodised
6116772	DBL-1B F2S 1C	With fastening clamp, 2 NF sockets, USB Charger	aluminium anodised
6116774	DBL-1B F4S 1C	With fastening clamp, 4 NF sockets, USB Charger	aluminium anodised

Socket



Item no.	Type	Version for	Colour
6120016	STD-D0 SWGR1	0°, single	Black-grey; RAL 7021
6120030	STD-D0 SWGR2	0°, double	Black-grey; RAL 7021
6120050	STD-D0 SWGR3	0°, triple	Black-grey; RAL 7021
6120081	STD-D3S SWGR1	33°, single	Black-grey; RAL 7021
6120111	STD-D3S SWGR2	33°, double	Black-grey; RAL 7021
6120131	STD-D3S SWGR3	33°, triple	Black-grey; RAL 7021
6120350	STD-D0C SWGR1	0°, single	Black-grey; RAL 7021
6120370	STD-D0C SWGR2	0°, double	Black-grey; RAL 7021
6120390	STD-D0C SWGR3	0°, triple	Black-grey; RAL 7021
6120491	STD-D3SC SWGR2	33°, double	Black-grey; RAL 7021
6120511	STD-D3SC SWGR3	33°, triple	Black-grey; RAL 7021
6120420	STD-D0C8 SWGR1	0°, single	Black-grey; RAL 7021
6120440	STD-D0C8 SWGR2	0°, double	Black-grey; RAL 7021
6120460	STD-D0C8 SWGR3	0°, triple	Black-grey; RAL 7021
6120180	STD-F0 SWGR2	0°, double	Black-grey; RAL 7021
6120200	STD-F0 SWGR3	0°, triple	Black-grey; RAL 7021
6120230	STD-F3 SWGR1	33°, single	Black-grey; RAL 7021
6120250	STD-F3 SWGR2	33°, double	Black-grey; RAL 7021
6120270	STD-F3 SWGR3	33°, triple	Black-grey; RAL 7021
6120540	STD-F0C SWGR1	0°, single	Black-grey; RAL 7021
6120560	STD-F0C SWGR2	0°, double	Black-grey; RAL 7021
6120580	STD-F0C SWGR3	0°, triple	Black-grey; RAL 7021
6120680	STD-F3C SWGR2	33°, double	Black-grey; RAL 7021
6120700	STD-F3C SWGR3	33°, triple	Black-grey; RAL 7021
6120610	STD-F0C8 SWGR1	0°, single	Black-grey; RAL 7021
6120630	STD-F0C8 SWGR2	0°, double	Black-grey; RAL 7021
6120650	STD-F0C8 SWGR3	0°, triple	Black-grey; RAL 7021

Cover frame



Item no.	Type	For accessory mounting box	Colour
6119324	AR45-F1 SWGR	71GD8-2, single	Black-grey; RAL 7021
6119334	AR45-BF1 SWGR	71GD8-2, single, with labelling panel for horizontal device installation	Black-grey; RAL 7021
6119339	AR45-BSF1 SWGR	71GD8-2, single, with labelling panel for vertical device installation	Black-grey; RAL 7021
6119344	AR45-F2 SWGR	71GD13, double	Black-grey; RAL 7021
6119354	AR45-BF2 SWGR	71GD13, double, with labelling panel for horizontal device installation	Black-grey; RAL 7021
6119364	AR45-BSF2 SWGR	71GD13, double, with labelling panel for vertical device installation	Black-grey; RAL 7021
6119374	AR45-F3 SWGR	71GD9-2, triple	Black-grey; RAL 7021
6119384	AR45-BF3 SWGR	71GD9-2, triple, with labelling panel for horizontal device installation	Black-grey; RAL 7021
6119388	AR45-BSF3 SWGR	71GD9-2, triple, with labelling panel for vertical device installation	Black-grey; RAL 7021

Data technology support



Item no.	Type	Version for	Colour
6119246	DTS-2B SWGR1	1 module, slanting outlet, type B	Black-grey; RAL 7021
6119252	DTS-2C SWGR1	1 module, slanting outlet, type C	Black-grey; RAL 7021
6119300	DTS-2RM SWGR1	1 module, slanting outlet, type RM	Black-grey; RAL 7021
6119210	DTG-2B SWGR1	1 module, straight outlet, type B	Black-grey; RAL 7021
6119216	DTG-2C SWGR1	1 module, straight outlet, type C	Black-grey; RAL 7021
6119294	DTG-2RM SWGR1	1 module, straight outlet, type RM	Black-grey; RAL 7021

Connection module



Item no.	Type	CAT
6117329	ASM-C6 G	6
6117341	ASM-C6	6
6117345	ASM-C6 GS	6 Snap-In
6117346	ASM-C6A G	6A
6117348	ASM-C6A	6A
6117349	ASM-C6 S	6 Snap-In

Multimedia support



Item no.	Type	Connection socket	Colour
6104757	MTG-DVI F SWGR1	DVI	Black-grey; RAL 7021
6104781	MTG-DV O SWGR1	DVI	Black-grey; RAL 7021
6104829	MTG-HD F SWGR1	HDMI	Black-grey; RAL 7021
6104925	MTG-U3A F SWGR1	USB 3.0 A-A	Black-grey; RAL 7021
6104949	MTG-MK L SWGR1	Audio jack	Black-grey; RAL 7021
6104997	MTG-R F SWGR1	Video cinch	Black-grey; RAL 7021
6105045	MTG-2R L SWGR1	Audio cinch	Black-grey; RAL 7021
6105069	MTG-2R F SWGR1	Audio cinch	Black-grey; RAL 7021
6105141	MTG-3R F SWGR1	Video cinch	Black-grey; RAL 7021
6105165	MTG-12R L SWGR1	Audio/video	Black-grey; RAL 7021
6105189	MTG-12R F SWGR1	Audio/video	Black-grey; RAL 7021
6104769	MTS-DVI F SWGR1	DVI	Black-grey; RAL 7021
6104793	MTS-DV O SWGR1	DVI	Black-grey; RAL 7021
6104841	MTS-HD F SWGR1	HDMI	Black-grey; RAL 7021
6104937	MTS-U3A F SWGR1	USB 3.0 A-A	Black-grey; RAL 7021
6104961	MTS-MK L SWGR1	Audio jack	Black-grey; RAL 7021
6105009	MTS-R F SWGR1	Video cinch	Black-grey; RAL 7021
6105057	MTS-2R L SWGR1	Audio cinch	Black-grey; RAL 7021
6105081	MTS-2R F SWGR1	Audio cinch	Black-grey; RAL 7021
6105153	MTS-3R F SWGR1	Video cinch	Black-grey; RAL 7021
6105177	MTS-12R L SWGR1	Audio/video	Black-grey; RAL 7021
6105201	MTS-12R F SWGR1	Audio/video	Black-grey; RAL 7021

USB charger



Item no.	Type	Connection socket	Colour
6105302	MTG-2UC2.1 SWGR1	Type A	Black-grey; RAL 7021

Antenna socket



Item no.	Type	Connection	Colour
6105284	ANT-3SD SWGR1	1 module, TV/radio/SAT, antenna socket	Black-grey; RAL 7021

Equipotential bonding socket



Item no.	Type	Version for	Colour
6120001	PAD-ID6 SWGR1	1 module, straight outlet	Black-grey; RAL 7021

Two-way switch



Item no.	Type	Version for	Colour
6120922	WS-UB SWGR0.5	1/2 module	Black-grey; RAL 7021
6120928	WS-UKL SWGR0.5	with LED element, 1/2 module	Black-grey; RAL 7021
6120934	WS-UB SWGR1	1 module	Black-grey; RAL 7021
6120940	WS-UKL SWGR1	with LED element, 1 module	Black-grey; RAL 7021

Blanking cover



Item no.	Type	Version for	Colour
6117407	ADP-B SWGR1	1/1 module	Black-grey; RAL 7021
6117415	ADP-B SWGR0.5	1/2 module	Black-grey; RAL 7021

Underfloor systems

Screed box for GES R2



Item no.	Type	Version for	Colour
7428526	UD GES R2	round	Steel, strip galvanised

Mounting support for GES R2



Item no.	Type	Version for	Colour
7408832	MT R2 VDE	Double VDE	Graphite black; RAL 9011
7408838	MT R2 1-1	1 + 1 empty	Graphite black; RAL 9011

Mounting plate for GES R2



Item no.	Type	Version for	Surface
7408804	MP R2 2B	for data technology type B	Stainless steel, rustproof
7408806	MP R2 2C	for data technology type C	Stainless steel, rustproof

Service outlet with blanking cover and opening contour, GES R2



Item no.	Type	Installation diameter mm	Colour
7405088	GES R2B 9011	140	Graphite black; RAL 9011

Service outlet with tube body and handle clamp, GES R2, deep black

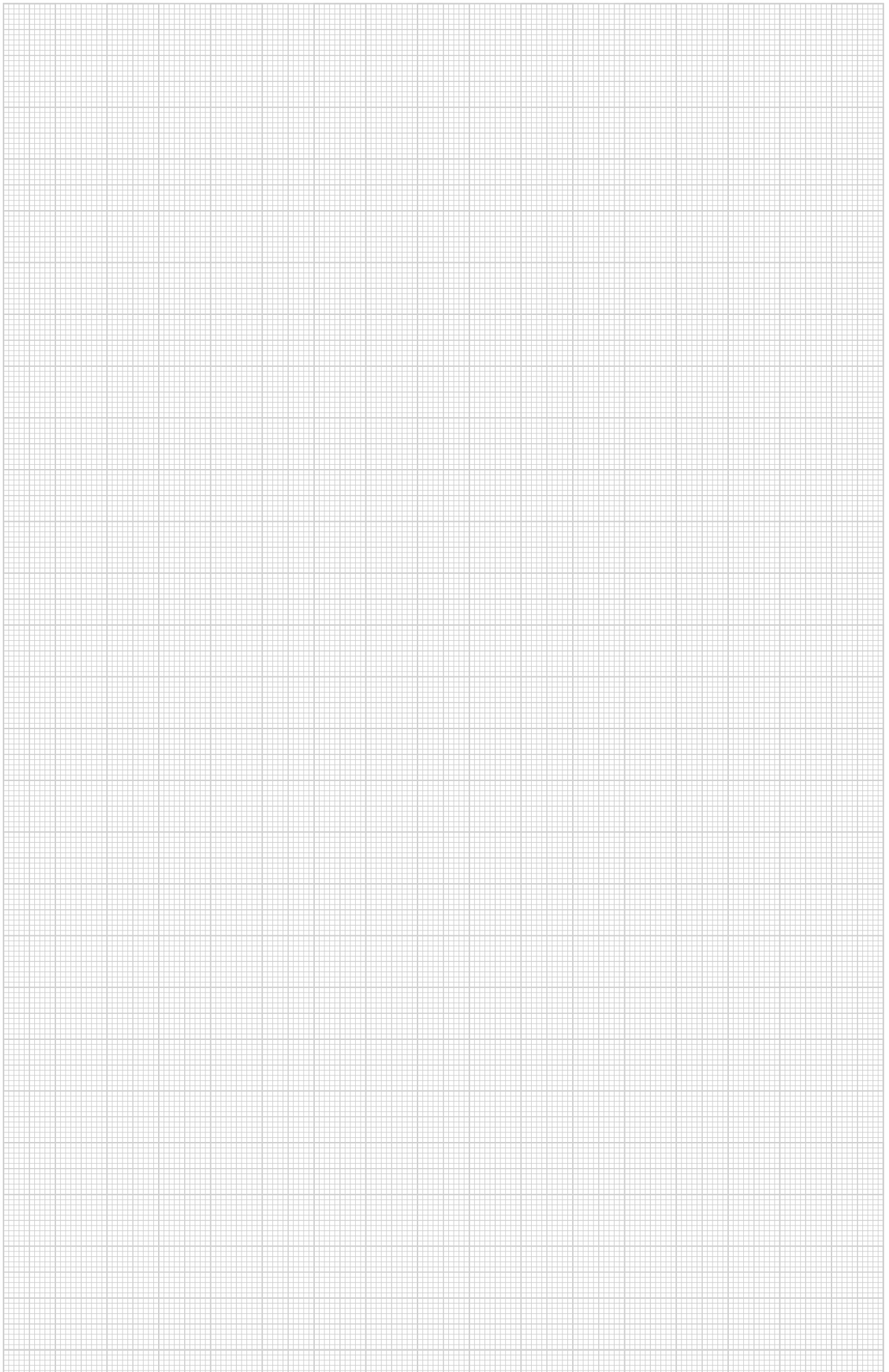


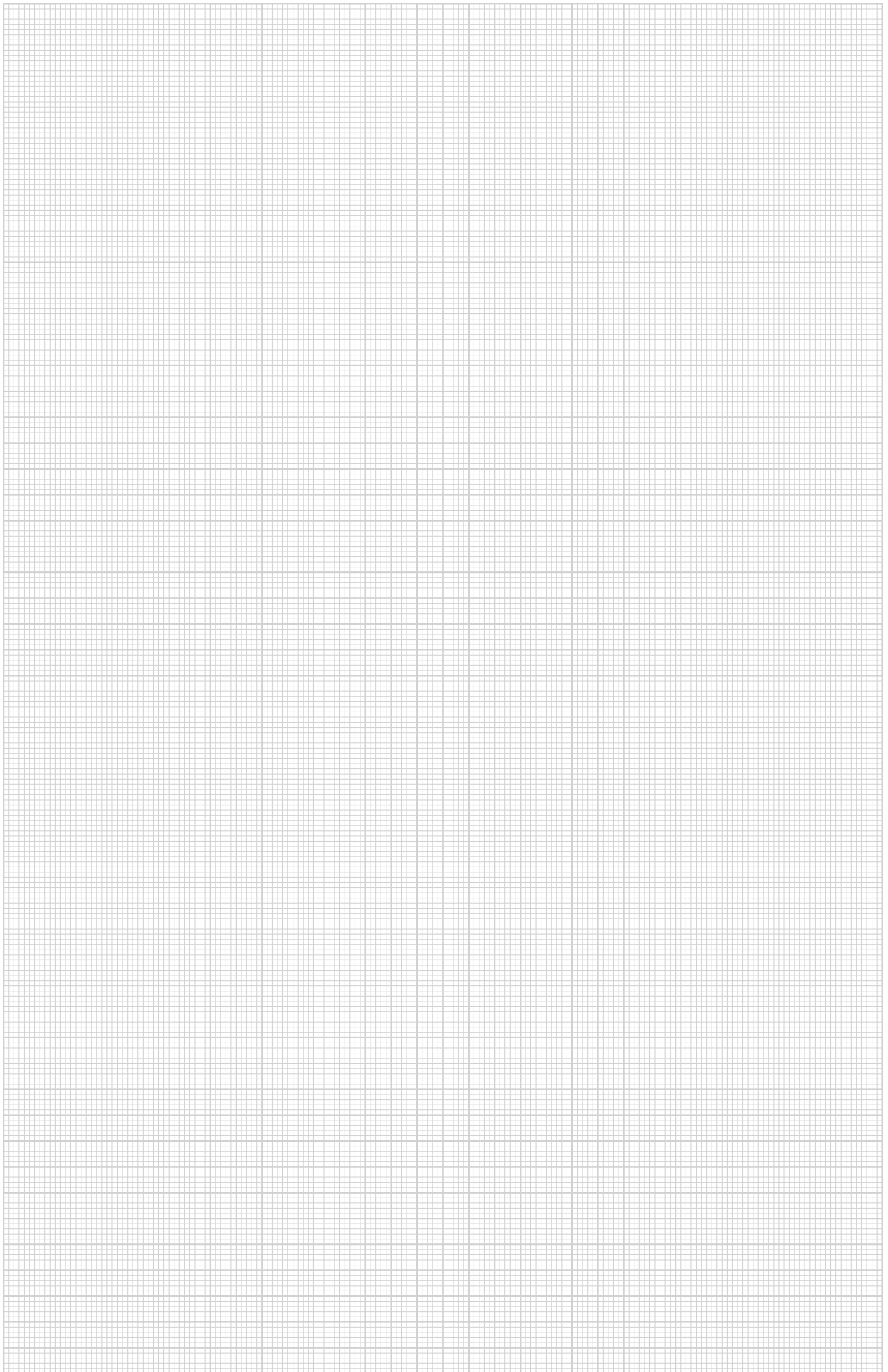
Item no.	Type	Installation diameter mm	Colour
7408857	GES R2T KP	140	Jet black; RAL 9005

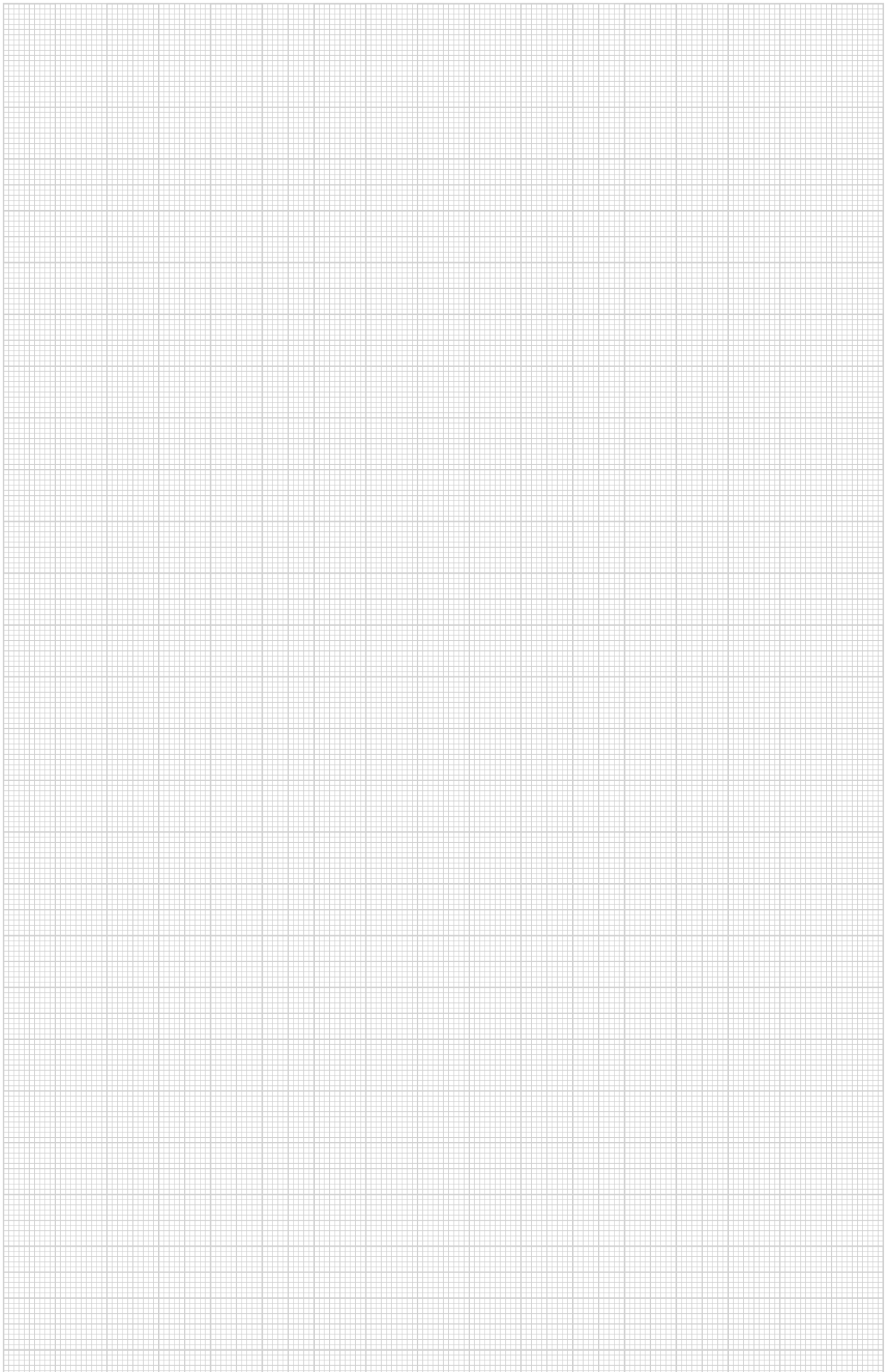
Service outlet with hinged cover, GES R2



Item no.	Type	Version for	Colour
7405084	GES R2 9011	with cord outlet	Graphite black; RAL 9011
7408847	GES R2 KP	with locking slider	Jet black; RAL 9005







Building Connections

OBO BlackLine offers extensive, stylish solutions for architects, planners and installers. Thanks to its compatibility with all OBO system solutions, it ensures maximum flexibility and quality.



*See the
OBO BlackLine range here.*

OBO Bettermann Holding GmbH & Co. KG
Hüingser Ring 52
58710 Menden
GERMANY

Customer Service Germany
Tel.: +49 (0)2373 89-2000
info@obo.de
www.obo-bettermann.com

© OBO Bettermann 04/2025 EN